

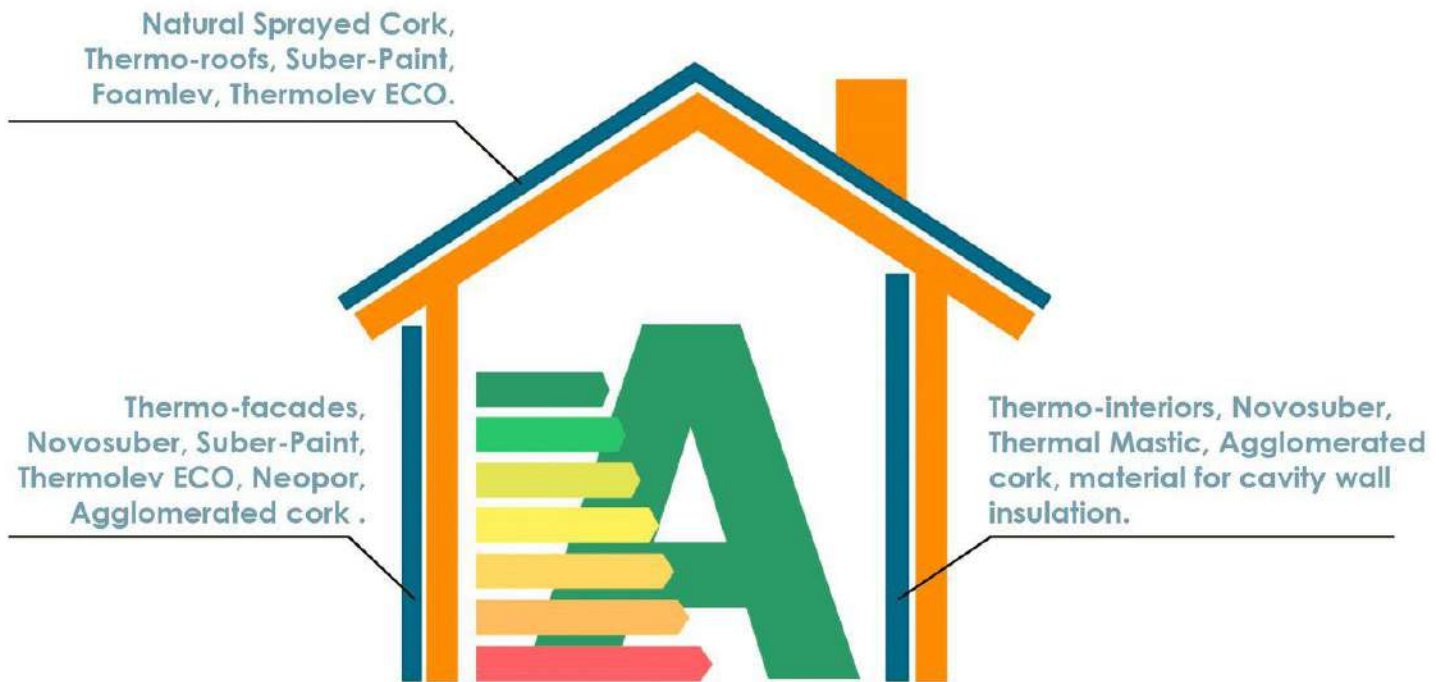


**SUBERLEV**

**XIV EDITION CATALOGUE  
TECHNICALLY ADVANCED INSULATION**



# TECHNICALLY ADVANCED INSULATION



**THE CHEAPEST ENERGY IS THE ENERGY  
YOU DON'T USE**

**WE DEVELOP NEW STANDARDS  
IN ORDER TO CREATE A BETTER  
ENVIRONMENT**

For the most part, building materials have not changed for many years. Only recently has this industry begun its modernization and technological development which has created a need for revolutionary Suberlev products.



## CONTENTS

### Primers, waterproofing products and sealers.

- 4 Fungilev / Suber-fix / Suber-oxid.
- 5 Anti-graffiti nanotechnology / Resin for bound aggregate.
- 6 PU primer + PU membrane. / Acrylic waterproofing membrane.
- 7 Concrete sealer / Artificial stone sealer / Water-repellent invisible sealer.

### Insulation materials and products for temperature control.

- 8 Thermo-interiors.
- 9 Thermo-interiors anti-bacteria / Bactilev.
- 10 Thermo-facades.
- 11 Thermo-facades anti-insects / Mosquilev.
- 12 Thermo-roofs shield / Thermo-Skylights shield.
- 13 Natural cork products.
- 14 Natural Sprayed Cork.
- 15 Novosuber / Novosuber dry.
- 16 Suber-Paint / Microlev microcement.
- 17 Flexible Thermal Mastic / Mastic Suberconfort dry.
- 18 Foamlev.
- 19 Thermolev eco / Flexilev eco.
- 20 ETICS plates / Suber-neopor / Agglomerated cork.
- 21 Material for Cavity Wall Insulation: Neolev / Natural Cork / Pearl compaction resin.
- 22 Window Insulation Films / Squeegee for window insulation film installation.
- 23 Window Insulation Films: Nanoceramic / Silver / Frost.

### EMR/EMF shielding.

- 24 EMR/EMF shielding paint / Grounding plug / EMF shielding curtain "Nature".
- 25 Air Tube headphones / Anti-Radiation cell phone case / Professional measurement.

### Machinery and application tools.

- 26 Spray guns: Special injection gun for cavity wall insulation and mortar / Aerographic gun for sprayed cork application / Special gun for mortar application.
- 27 Machinery: Industrial sprayed cork application machine/ Cork and mortar projection machine / Pearl compaction machine.

### Lighting, ventilation and accessories.

- 28 Solar tube "Suber-tube" / LED-in system.
- 29 Lev-filter forced ventilation system for condensation control / Solar extractor fan / Adjustable industrial extractor.
- 30 Levfilter eco / Levfilter eco duo.
- 31 Levfilter eco 220.
- 32 Thermography.

### Marketing and other services.

- 33 Services.
- 34 Display stands.

### 35 Colour chart.

## FUNGILEV



**Fungicidal wash** kills bacteria and quickly removes mould, algae, lichen and fungal growth. Ideal for general maintenance and prior to applying surface coatings, e.g., paint, sprayed cork, etc.

1 L.	5 L.
Ref. 025	Ref. 026

Coverage	Approximately 0,15 L/m <sup>2</sup> .
Application method	Apply by brush, roller or use a paint sprayer, one or two coats depending on how badly the area is infested.

## SUBER-FIX



**Acrylic bonding primer** has been designed as a deep penetrating sealing product which may be used on facades and roofs. Our **nanotechnology-based** primer is suitable for lime, plaster, cement surfaces, etc. It has great adhesion properties.

750 ml.	4 L.	15 L.
Ref. 001	Ref. 002	Ref. 003

Drying time	1-2 hours.
Recoat time	3-4 hours.
Coverage	0,04 L/m <sup>2</sup> (4L = 100 m <sup>2</sup> ; 15L = 375 m <sup>2</sup> ). Coverage is dependent on the nature of the surface being painted.
Thinning	1:4 (1 part product to 4 parts water).



## SUBER-OXID

NEW



**Water based primer 3 in 1** is a multi-purpose protective metal coating which can be applied directly onto rusty metal, as it **converts rust to a neutral surface**; it also acts as an **antioxidant** and a rust-inhibitor providing extra corrosion protection and preventing both flash-rust and atmospheric corrosion. Besides, Suber-Oxid is an easy-to-apply, low-odour product.

2,5 L.	15 L.
Ref. A336	Ref. A337

Coverage	0,40 L/m <sup>2</sup> .
Drying time	2-3 hours.

<b>750 ml.</b>	<b>3 L.</b>
Ref. A358	Ref. 024

## ANTI-GRAFFITI NANOTECHNOLOGY

Our anti-graffiti coating will help you **protect the surface** from unwanted graffiti vandalism. It is effective against various types of graffiti media including permanent marker pen and spray paint. It also prevents animal urine from penetrating and staining the underlying surface.

Anti-graffiti coating works by creating a **water-resistant clear coat barrier** over the surface being protected. Thus, **graffiti washes away easily** with hot water and a stiff fibre brush (we recommend using a high-pressure washer).

The coating **doesn't change the appearance** of the surface. A one coat application is sufficient to afford protection. (However, once the graffiti is removed it's recommended to reapply the product to restore the graffiti barrier).



<b>Coverage</b>	0,30 - 0,40 L/m <sup>2</sup> .
<b>Drying time: Touch dry</b>	6-12 hours.



<b>4 L.</b>	<b>15 L.</b>
Ref. 016	Ref. 017

## RESIN FOR BOUND AGGREGATE

Methacrylate **resin binds together aggregates and decorative stones to form** walkways and footpaths. Resin bound and resin bonded systems are excellent surfacing solutions for parks and gardens. Moreover, resin bound gravel tree pits offer a water permeable surface designed to allow water and air to reach tree roots.

<b>Application method</b>	Apply by spray gun or knead the resin with aggregates.
<b>Coverage</b>	6-8 L. of resin for 100-125 kg of arid.
<b>Drying time: Touch dry</b>	8-12 hours.
<b>Drying time: Hard dry</b>	24-48 hours.



## PU PRIMER + PU MEMBRANE

<b>750 ml.</b>	<b>4 L.</b>	<b>15 L.</b>
Ref. 004	Ref. 005	Ref. 006



### FOR PROFESSIONAL USE ONLY

**Water-based** primer which can bond a polyurethane membrane to porous and other hard-to-bond substrates.

<b>Coverage</b>	0,15 - 0,20 L/m <sup>2</sup> .
-----------------	--------------------------------



<b>4 L.</b>	<b>15 L.</b>
Ref. 010	Ref. 011



**Liquid polyurethane membrane** is a high-quality **single-component** water-based membrane for the protection and waterproofing of terraces, roofs, pedestrian zones and other places where it's necessary to prevent water leak damage. It cures to give a seamless, tough, durable, waterproof coating.



**AIDICO**  
INSTITUTO TECNOLÓGICO  
DE LA CONSTRUCCIÓN

Certified by AIDICO in accordance with the adherence standard EN 1542 and the waterproofing standard EN 1062.

<b>Coverage</b>	On roofs or terraces apply from 1,2 to 2,2 L/m <sup>2</sup> . A minimum of 2 o 3 coats is recommended.
<b>Drying time: Touch dry</b>	6-8 hours.
<b>Recoat time</b>	10-12 hours.
<b>Colour</b>	White, grey, red or green. More colours available on request.

## ACRYLIC WATERPROOFING MEMBRANE

<b>4 L.</b>	<b>15 L.</b>
Ref. 012	Ref. 013



**Flexible waterproofing** membrane is suitable for use on terraces, roofs, walls and places where it's necessary to prevent water leak damage. It cures to give a seamless, tough, durable, waterproof coating.

<b>Coverage</b>	On facades apply 0,75 L/m <sup>2</sup> . On terraces apply from 1,2 to 1,8 L/m <sup>2</sup> .
<b>Drying time</b>	2-4 hours.
<b>Recoat time</b>	8-12 hours.
<b>Colour</b>	Transparent.

## CONCRETE SEALER

4 L.	15 L.
Ref. 014	Ref. 015

Our concrete sealer made on the basis of **acrylic and methacrylate resins** is suitable for horizontal surfaces that either have a waterproofing coating or are painted with plastic paint. It can also be applied to micro cement and stamped concrete surfaces. Ideal for use in high traffic areas. The product can be thinned by 25% maximum.

Coverage	0,15 - 0,30 L/m <sup>2</sup> .
Drying time: Touch dry	2-3 hours.



4 L.	15 L.
Ref. 018	Ref. 019

## ARTIFICIAL STONE SEALER

Water based sealer **for use on facades, artificial stone tiles**, single-coat mortar and natural stones. It protects the surface and makes it water-repellent.

Coverage	0,15 - 0,30 L/m <sup>2</sup> .
Drying time: Touch dry	2-3 hours.
Colour	Transparent satin



## WATER-REPELLENT INVISIBLE SEALER

750 ml.	4 L.	15 L.
Ref. 020	Ref. 021	Ref. 022

**Siloxane-based water-repellent** sealer is for use on street-facing facades, single-coat mortar or natural stone. It provides a water-repellent transparent finish.

Coverage	0,15 - 0,30 L/m <sup>2</sup> .
Drying time: Touch dry	2-3 hours.



## THERMO-INTERIORS



750 mL	4 L.	15 L.
Ref. A230	Ref. 029	Ref. 030



**GREEN PRODUCT. LOW ODOUR  
NON-DRIP PAINT  
SMOOTH FINISH**

**NEW  
FORMULA**

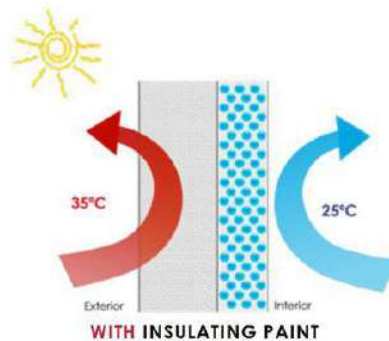
High-quality interior insulating paint of low thermal conductivity. It is made up of **hollow nanospheres** and heat reflective **nanotechnology-based** pigments. Insulating paint is a great energy-saving solution as it reduces the amount of heat that transfers through the walls. All this makes this paint suitable for both hot and cold climates.

Another advantage of this paint is that it has a **sound-absorbing** effect. It's a perfect **thermal insulation** and **anti-condensation** coating.



Colour	White, colour chart of 400 colours or NCS colour chart.
Finish	Matte.
Thinner	Water.
Drying time	1 hour (20° C and 60% H.R.).
Recoat time	4-6 hours (20° C and 60% H.R.).
Coverage	Recommended minimum coverage is 350 ml/m <sup>2</sup> .
VOC	Cat. a/BA 75/30 (2007/2010): 0,16 g/L.
Washability	Class 2.
Application method	Apply by brush, roller or suitable spray gun.

\* Paint can be specified in a wide range of tinted colours.



THERMAL PAINT PREVENTS HEAT FROM TRANSFERRING THROUGH IT AND REDUCES ENERGY LOSS



Certified by AIDICO in accordance with the standard UNE-EN 7783/2. Reaction to fire UNE 23727:90. Sound absorption coefficient UNE-EN ISO 354:2004 LGAI Technological Center

	Ref.031 750 ml	Ref.032 750 ml	Ref.033 750 ml	Ref.034 750 ml	Ref.035 750 ml	Ref.036 750 ml	Ref.037 750 ml	Ref.038 750 ml
								
+4 L white								
+15 L white								



4 L.	15 L.
Ref. 042	Ref. 043



## THERMO-INTERIORS ANTI-BACTERIAS

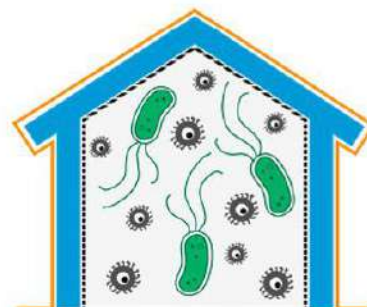
GREEN PRODUCT. LOW ODOUR  
NON-DRIP PAINT  
SMOOTH FINISH

NEW  
FORMULA

Interior **insulating** plastic paint which **kills bacteria**.

Acrylic copolymer emulsion is a water-based dispersion emulsion with nano-structured additives. It offers antibacterial protection as it is enhanced through the use of the **silver ion** technology which inhibits mould growth and prevents bacteria from multiplying.

This hygiene coating is really white, low odour and easy to apply. These characteristics make it ideal for use in commercial centres, hospitals, nursing homes, hotels, kindergartens, schools and other public institutions.



250 ml.	1 L.	5 L.
Ref. A340	Ref. A339	Ref. A341

**Next-generation** disinfectant which contains **silver ions** and **quaternary ammonium** compounds. It is suitable for use on all types of metallic or varnished surfaces (such as stair rails, doorknobs, handles, roasting pans, pieces of furniture, doors, tables, etc), it can also be used to disinfect clothes and tools. Moreover, Bactilev helps to protect people from possible infection after contact with animals.

## NEW BACTILEV



## THERMO-FACADES



750 ml.	4 L.	15 L.
Ref. 039	Ref. 040	Ref. 041



High-quality exterior insulating paint of low thermal conductivity. It is made of **hollow nanospheres and heat reflective nanotechnology-based pigments**. Insulating paint is a great energy-saving solution as it reduces the amount of heat that transfers through the walls. All this makes this paint suitable for both hot and cold climates.

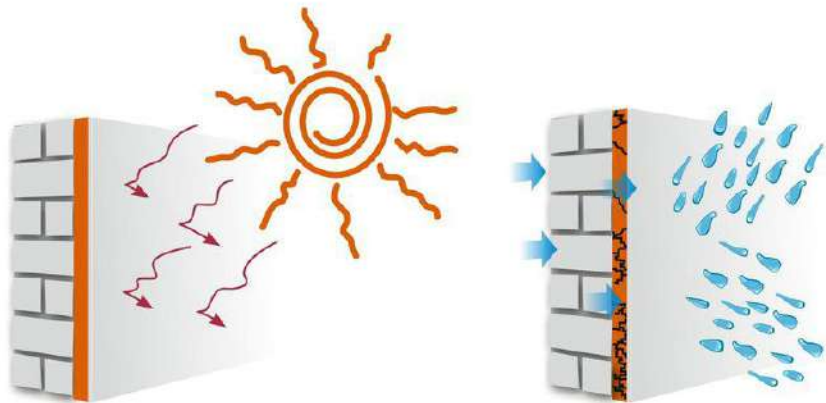
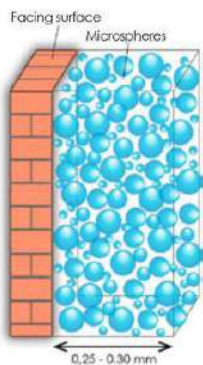
Another advantage of this paint is that it has a **sound-absorbing** effect. It's an ideal **thermal insulation** and **anti-condensation** coating.



Certified by AIDICO in accordance with the standard "UNE-EN 7783/2. Reaction to fire UNE 23727:90. Sound absorption coefficient UNE-EN ISO 354:2004 LGAI Technological Center

Colour	Blanco, Carta 400 colours o Carta NCS.
Finish	Matte.
Thinner	Water.
Drying time	1 hour (20° C and 60% H.R.).
Recoat time	4-6 hours (20° C and 60% H.R.).
Coverage	Recommended minimum coverage is 350 ml/m <sup>2</sup> .
VOC	Cat. a/BA 75/30 (2007/2010):0,16 g/L.
Washability	Class 2.
Application method	Apply by brush, roller or suitable spray gun.

\* Paint can be specified in a wide range of tinted colours.



4 L.	15 L.
Ref. 044	Ref. 045



## THERMO-FACADES ANTI-INSECTS

**NATURAL PRODUCT**  
**EUCALYPTUS OIL BASED**  
**NON-TOXIC**

Insulating paint that **repels** all types of **insects and mites**. Its innovative polymeric microcapsule-based technology allows for a slow release of insect and mite repellents, as well as insect growth regulators. It's **non-toxic** and has a long-lasting effect.

**Insect repellent paint** helps control pests in healthcare facilities, veterinary centres and food factories. It's very effective against all types of insects. It's a perfect solution for the places that may potentially suffer from insect infestation, e.g., inside and outside houses, offices, health centres, schools, etc.



Repels insects, releasing natural substances derived from essential oils.

1 L.	5 L.
Ref. A353	Ref. A354

**Complementary** product that is meant to be used together with the **floor** or **wall** cleaner of your choice in order to enhance its **insect repellent properties**. Mosquilev is composed of citriodiol, citronella and **natural essences**.



## NEW MOSQUILEV





## THERMO-ROOFS SHIELD



<b>4 L.</b>	<b>15 L.</b>	<b>15 L - 7 YEAR</b>
Ref. 047	Ref. 048	Ref. A301

High-quality insulating **waterproofing** coating which acts as a protective shield for roofs and facades.

Water-based coating made up of acrylic resins, new generation high-quality polyurethane, **hollow nanospheres and heat reflective pigments**. It can be used for thermal insulation (it reduces temperature inside homes and industrial buildings). Suitable even for galvanized steel.

The coating **reduces temperature** by 4° to 25°C depending on the outside air temperature and on the support it is applied to.

It's recommended to use **Suber-Oxid** prior to applying surface coating in order to remove rust and provide **better protection**.

Use **Concrete Sealer** Suberlev to increase trafficability and make cleaning easier.



WATERPROOF AND THERMAL INSULATION

Coverage	On facades apply 0,8 - 1,5 L/m <sup>2</sup> . On roofs apply from 0,8 to 2 L/m <sup>2</sup> , depending on the number of coats.
Colour	White, other colours available on request.
Thinner	Water.
Application method	Apply by brush, roller or suitable spray gun.
Solar reflection factor	83,9% (ASTM G173 - 03).
Emissivity	0,75 (ASTM C1371 - 04a(2010)e1).
Reduction of heat flow	73,84% (UNE-EN 1062-3).
Water permeability	0,01 kg/(m <sup>2</sup> · h0'5) (EN 1504-2).

## THERMO-SKYLIGHTS SHIELD



<b>2,5 L.</b>	<b>15 L.</b>
Ref. A241	Ref. 052

Insulating coating for skylights that are made of polycarbonate, fibre, glass, etc. It has a great insulating capability both in summer (it reduces heat and UV rays), and in winter.

It allows light to pass through it, but **blocks infrared radiation** that generates excessive heat and ultraviolet rays that can fade and discolour furniture and damage goods stored indoors. This protective coating also reduces annoying glare.



Coverage	In case it is necessary to provide solely thermal insulation, apply 0,15 L/m <sup>2</sup> .
	In case it is necessary to provide thermal insulation and waterproof, apply previously 1,5 L/m <sup>2</sup> of the Acrylic Waterproofing Membrane.
Drying time	From 4 to 10 hours at 20° C and 60% HR.
Colour	Translucent.
Thinner	Water.
Finish	High satin.



Cork is the outer bark of the cork oak (*Quercus Suber*). The bark protects the tree from the extreme conditions of the Mediterranean climate. It is a slow-growing tree that has a lifespan of 150-200 years. The cork bark is harvested every 9 or 13 years.



Thanks to the irregularly shaped, thin-walled, wax-coated cells that this plant tissue is made of, cork becomes highly elastic, resistant and durable.

These cells are filled with suberin, which makes them a moisture resistant filler and a perfect material for thermal insulation. Moreover, suberin demonstrates excellent antibacterial and antimicrobial activity. It also prevents the cork from deteriorating.

## SIERRA ESPADÁN



### The main advantages of cork are:

- **Light weight.** About 90% of the volume of cork is occupied by air, that's why it has a very low density.
- **Impermeability.** Suberin makes cork cells impermeable to liquids and gases.
- **Elasticity.** The cork cell membranes are extremely flexible and able to withstand high pressure without deforming.
- **Durability.** Cork is exposed to adverse weather conditions for hundreds of YEAR, managing to protect the cork oak from any damage.
- **Thermal insulation.** The thermal conductivity coefficient ( $\lambda$ ) is 0,03 – 0,04 W/mK for the density of 120 kg/m<sup>2</sup>.
- **Fire resistance.** Cork is a material that is very difficult to burn. When burning, it does not produce flame, so it doesn't spread, nor does it emit toxic gases.
- **Sound insulation.** Cork is naturally good at noise reduction; it prevents airborne noise, impact noise and vibration transmission.

### Products:

Considering all the above-mentioned reasons, cork proves to be one of the best options for the construction material manufacturing. We are proud to say that since 2008 Suberlev company has been fabricating and innovating cork-based products, such as:



- Sprayed cork.
- Cork paint.
- Cork-based Thermal Mastic.
- Cork flooring.
- Cork boards.
- Cork Cavity Wall Insulation.



## NATURAL SPRAYED CORK

roofs and facades



12 Kg.

Ref. 059-083, A280-A282



High-quality **natural coating** that forms a thin seamless film. It is specifically used for **thermal correction**, roof and facade **waterproofing** or asbestos (uralite) encapsulation. It is a weather-resistant product based on sterilized natural cork granules, new generation resins and highly stable inorganic pigments.

Granulometry	0,4 -0,9 mm.
Application	Apply by spray gun or Suberlev spraying machine.
Recommended coverage	2 kg/m <sup>2</sup> (6-10 m <sup>2</sup> per bucket).
Thermal conductivity	0,059 W/m <sup>2</sup> K (EN 12667).
Heat flow test	Considerable decrease: 69'15%.
Water vapor permeability	Class I (EN 1504-2).
Liquid water permeability	0,05 kg/(m <sup>2</sup> ·h0,5) (UNE-EN 1062-3).
Coefficient of adhesion in traction	9,17 kg/cm <sup>2</sup> and 13,17 kg/cm <sup>2</sup> (UNE-EN 1542).
Slip resistance	Class 3 (UNE-ENV 12633).
QUV Accelerated Weathering Test (3000 hours)	No change in appearance, cracking, peeling, blistering or loss of adherence (UNE-EN ISO 11507).
Fire resistance	Euroclass B - s1 - d0 (UNE-EN 13501-1+A1).
Asbestos (uralite) encapsulation	Prevents asbestos fiber dispersion (UNI 10686).



## NATURAL SPRAYED CORK

Facades and interiors



12 Kg.

Ref. 084-108, A283-A285



High-quality fine-grained natural coating that forms a **breathable** film and helps **prevent capillary moisture**. It can be used outdoors and indoors. Additionally, this product is ideal for acoustic correction.

Granulometry	0,1 -0,4 mm.
Application method	Apply by spray gun or Suberlev spraying machine.
Recommended coverage	2 kg/m <sup>2</sup> (7-11 m <sup>2</sup> per bucket).
Thermal conductivity	0,059 W/m <sup>2</sup> K (EN 12667).
Heat flow test	Considerable decrease: 69'15%.
Sound absorption	Class E (UNE-EN ISO 354)
Water vapor permeability	Class I (EN 1504-2)
Liquid water permeability	0,05 kg/(m <sup>2</sup> ·h0,5) (UNE-EN 1062-3)
Coefficient of adhesion in traction	0,9 MPa (UNE-EN 1542)
QUV Accelerated Weathering Test (2000 hours)	No change in appearance, cracking, peeling, blistering or loss of adherence (UNE-EN ISO 11507)
Fire resistance	Euroclass B - s1 - d0 (UNE-EN 13501-1+A1)



**12 Kg.**  
Ref. NOVO



**NOVOSUBER**

Single-component **medium-grained** sprayed cork coating based on natural cork, **waterborne resins** and inorganic pigments **designed to be stable** for external application.

This insulating product also helps prevent capillary rising damp and future problems with condensation, including mould and fungus.

It's a breathable non-toxic **biodegradable** material.



Granulometry	0,4 - 0,6 mm.
Application method	Apply by pistol or Suberlev spraying machine.
Coverage	2 kg/m².
Thermal conductivity	0,061 W/m°K (EN 12667).
Liquid water permeability	0,058 kg/(m² h0,5) (UNE-EN 1062-3).

**5,5 Kg.**  
Ref. NOVO\_D



**NOVOSUBER DRY**

Dehydrated Sprayed Cork. This innovative cork coating is used for **protection, decoration and thermal insulation** on both exterior and interior surfaces.

It's a flexible, permeable insulation product that effectively bonds to different types of supports.

Its innovative packaging process makes this product stand out. It allows for both weight and volume optimization when transported nationally or internationally.



Coverage	1- 2,5 kg/m² (depending on the application).
Thickness	3 mm maximum.
Application method	Apply by the Suberlev spray gun.
Drying time	4-6 hours (under normal conditions).
Thinning	6 L of water to 5,5 kg of the product.
Thermal conductivity	0,052 W/m°K (EN 12667)
Coefficient of adhesion in traction	1,8 MPa (A:B =10%: 90%) (UNE-EN 1542)



## SUBER-PAINT



<b>4 L.</b>	<b>15 L.</b>
Ref. A249	Ref. A250



**Crack-free** and **anti-carbonation** paint for use on facades and roofs. It has very low thermal conductivity due to the fact that its formula contains **natural cork microparticles**. Not only does this paint help save energy as it reduces the amount of **heat** that **transfers** through the walls and roof, but it also provides extra **protection** against pollution (carbon dioxide).

This is a product with excellent covering power. Moreover, it is easy to apply. It's a perfect thermal insulation and anti-condensation coating.

This paint can also be used for **sound insulation**. It reduces noise and vibrations of industrial equipment.



Application method	Apply by brush, roller or suitable spray gun.
Coverage	0,6 – 1,5 L/m <sup>2</sup> .
Heat flow test	Considerable decrease: 65'00%.
Water vapor permeability	Class I (EN 1504-2).
Liquid water permeability	0,001 kg/(m <sup>2</sup> h0,5) (UNE-EN 1062-3).
Coefficient of adhesion in traction	1,4 MPa (UNE-EN 1542).
QUV Accelerated Weathering Test (2000 hours)	No change in appearance, cracking, peeling, blistering or loss of adherence. Slight change in brightness. (UNE-EN ISO 11507).

## MICROLEV Microcement

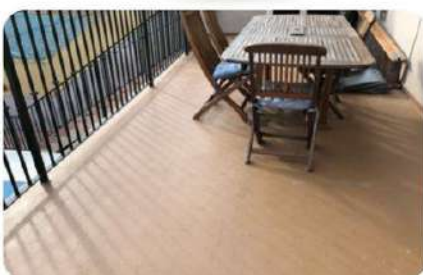


<b>10 L.</b>
Ref. A351



**Thin film** coating composed of **natural cork microbeads**, **micronized cement** and metakaolin, **high-quality resins** and natural inorganic pigments. It's a flexible product that can be applied on floors, walls and roofs. It forms a **uniform seamless film**. This product offers the opportunity to create a wonderful **decorative** finish on both interior and exterior surfaces.

Microlev is able to adhere to **almost any type of surface**: polished porcelain tiles, concrete, terracotta tiles, parquet, painted surfaces and many other well-prepared and clean substrates.



Application	Apply by trowel, spray gun or suitable spraying machine.
Coverage	1 L/m <sup>2</sup> .
Textures	Medium and fine.
Colours	Colour chart of 400 colours and colour chart of Sprayed Cork 28 colours.



<b>4 L.</b>	<b>15 L.</b>
Ref. 133	Ref. 134



## FLEXIBLE THERMAL MASTIC

**High-quality mastic based on natural cork and fibreglass.** It is used for **thermal** and **sound insulation**. This product **bonds to any type of surface** (ceramic tiles, glass, cement, etc). It's very **flexible**, that's why it absorbs movement in buildings very well.

Application method	Apply by trowel, scraper or Suberlev spraying machine.
Coverage	2 kg/m <sup>2</sup> .
Water vapor permeability	Class I (EN 1504-2).
Liquid water permeability	0,006 kg/(m <sup>2</sup> h0,5) (UNE-EN 1062-3).
Coefficient of adhesion in traction	1,0 MPa (UNE-EN 1542).



Certified by AIDIMME according to various standards specified in the table

<b>8 Kg.</b>
Ref. A338



## DRY MASTIC "SUBERCONFORT"

**Dry thermal mastic based on cement, cork granules and glass fibre.** It is ideal for **plastering** and **smoothing** surfaces, as well as for installing ETICS systems and reducing thermal bridging, etc.

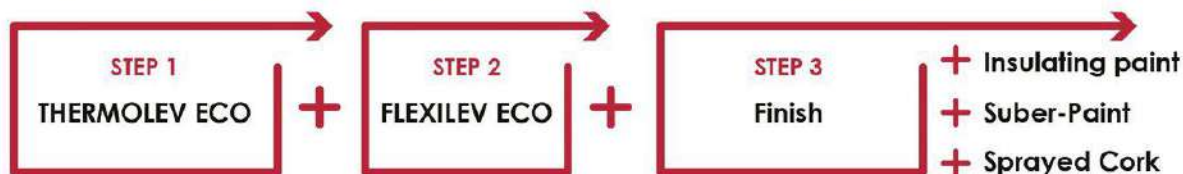
Application	Apply by trowel, scraper or Suberlev spraying machine.
Coverage	0,55 kg/m <sup>2</sup> y mm.
Thinning	7 L of water to 8 kg of the product.
Thermal conductivity	0,094 W/m <sup>2</sup> K (EN 12667).
Coefficient of adhesion in traction	0,5 MPa (B=100%) (UNE-EN 1542).
Adhesion to ceramic tile	1,3 MPa (A/B=30%; B=70%) (UNE-EN ISO 4624).



Certified by AIDIMME according to various standards specified in the table

## MINERAL ETICS IN THREE STEPS

ETICS which consists of Thermolev ECO, Flexilev ECO and a finishing material (paint or sprayed cork). It adapts to any type of surface creating a seamless coating. With this system there will be no need for priming mineral surfaces. It can be applied up to 12\* cm thick without any reinforcement.



\* For thicknesses larger than 12 cm, it is recommended to set up a 3 cm hexagonal galvanized metal mesh.



11 kg. (50L aprox.)

Ref. A325

**Lime mortar** for thermal insulation with added recycled **EPS aggregates** and thermally expanded volcanic rock. It's a **breathable** product that doesn't absorb water and improves **thermal** and **sound insulation**. Moreover, it reduces problems with capillary rising damp on skirting boards of internal and external walls.

Granulometry	≤ 1 - 4 mm.
Application method	Apply by trowel or Suberlev Spraying Machine.
Coverage	2 - 2,3 kg/m <sup>2</sup> and cm.
Thinning	Approx. 15 - 18L of water to 1 bag of the product.
Thermal conductivity	0,05 W/m <sup>2</sup> K (EN 12667).
Volumetric mass	220 kg/m <sup>3</sup> ± 20 (EN 1015-10).
Water vapor permeability	μ ≤ 8,7 (UNE-EN 1015-19).
Compressive strength (28 días)	0,40 N/mm <sup>2</sup> .
Flexural strength (28 días)	0,30 N/mm <sup>2</sup> .
Adhesion	≥ 0,06 MPa (UNE-EN 1015-12).
Fire resistance	Euroclass B - s1 - d0 (UNE-EN 13501-1+A1).



18  
Nº. DdP: 06  
UNE-EN 998-1

**AIDIMME**  
INSTITUTO TECNOLÓGICO  
DE INVESTIGACIÓN Y DESARROLLO



12 kg.

Ref. A335

**Fiber-reinforced** dry mortar made up of hydraulic lime binders, silicas and fiberglass among other components. This product is **easy to use**, it can be applied manually. It's **weather-resistant** and allows for a **smooth finish**.

Application method	Apply by trowel, scraper or Suberlev spraying machine.
Coverage	1,10 kg/m <sup>2</sup> and mm.
Thermal conductivity	0,083 W/m <sup>2</sup> K (EN 12667).
Thinning	5 - 6 L of water to 1 bag of the product.



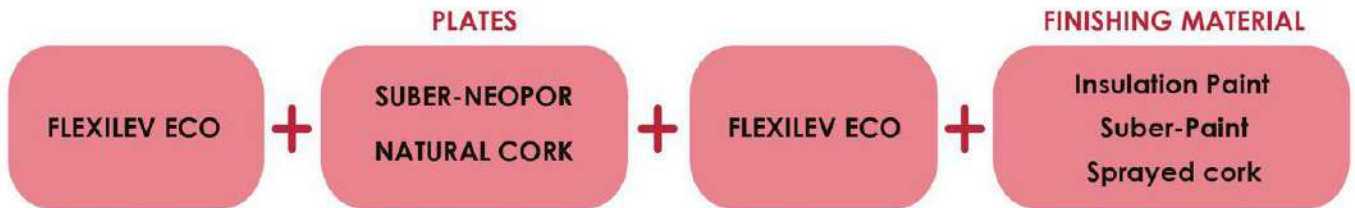
18  
Nº. DdP: 06  
UNE-EN 998-1

## FLEXILEV ECO



## ETICS PLATES

This system consists of an adhesive agent, heat insulating plates, a coat of plaster and a finishing material. It's a dry adhesive insulation system with additional mechanical anchoring (special fixings and building profiles). An easy-to-apply ETIC system improves energy efficiency of passive houses and zero-energy buildings.



ADHESIVE



ARRANGEMENT OF PLATES



ANCHORS



PLASTER



FINISH

## SUBER-NEOPOR



Expanded polystyrene (EPS) plates with added **encapsulated graphite particles**, therefore the material has a very low thermal conductivity.

Dimensions	0,50 x 1,00 m.
Coverage	2 plates/m <sup>2</sup> .
Thermal conductivity	0,029 W/m <sup>2</sup> K (EN 12667).
Thickness	Various thickness is available if you purchase the minimum order quantity.

## AGGLOMERATED CORK



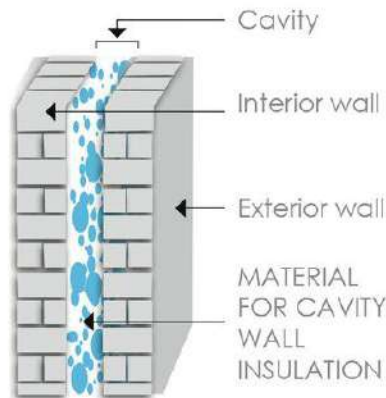
Agglomerated Cork boards obtained from the **expansion of cork granules** through a water vapor process. It is a 100% natural product **without any synthetic agents**.

Dimensions	0,50 x 1,00 m.
Coverage	2 plates/m <sup>2</sup> .
Thermal conductivity	0,04 W/m <sup>2</sup> K (EN 12667).
Thickness	Various thickness is available if you purchase the minimum order quantity.

# MATERIALS FOR CAVITY WALL INSULATION

Material for dry insulation that is used for filling up air cavities, false ceilings and roofs in the houses with poor insulation that are undergoing restoration.

This type of insulation involves a specialist drilling holes in the outer leaf of your cavity wall in order to pump in insulation. You won't have to start a home renovation. Moreover, you can blow insulation into walls from inside the house and from outside.



**500 L.**

Ref. A251

EPS-based dry insulation with added **encapsulated graphite**. Its extremely low thermal conductivity and **ease of application** make this **innovative** product stand out.

**NEOLEV**



Thermal conductivity	0,029 W/m <sup>2</sup> K.
Granulometry	1 - 4 mm.
Coverage	500L. 1 pallet = 4 bags = 2m <sup>3</sup> .



**60 L.**

Ref. A208

Natural cork granules used **specially** for blowing in the **cavities** that need both **thermal** and **sound insulation**.

**NATURAL CORK**



Thermal conductivity	0,050 W/m <sup>2</sup> K.
Granulometry	0'4-2 mm. Density: 300 kg/m <sup>3</sup> .
Coverage	60L. 1 pallet = 30 bags = 1,8m <sup>3</sup> .



**15 L.**

Ref. A344



**PEARL COMPACTION RESIN**

Single-component water-based **resin dispersion**. This product is ideal for the immediate **bonding** of cavity wall insulation.

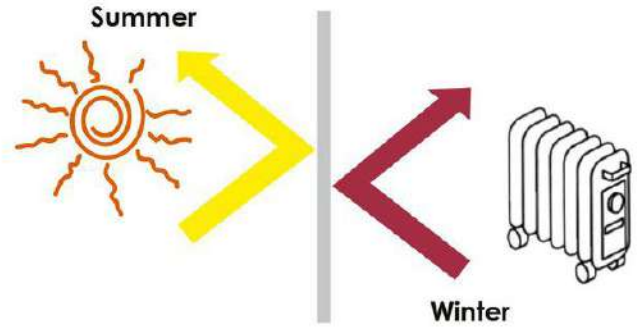
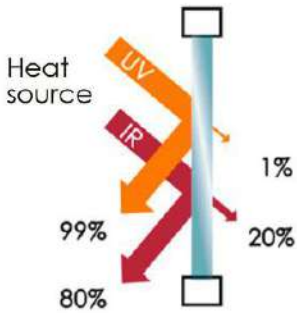
One-component resin in **aqueous dispersion**. Ideal for **compacting** pearl, the cavity wall insulation material (XPS, EPS, etc.) at the time of application.

Coverage	6 - 8 L per each 500 L of the material (EPS, etc).
Thinning	50% of water.



Innovative insulation films system that incorporates ceramic microspheres. It helps insulate your windows against excessive summer heat and prevents heat loss during cold winter months.

Thanks to nano ceramic technology we were able to create an optimal window insulation for both winter and summer.



## INSTALLATION INSTRUCTIONS



CLEAN THE SURFACE



CUT THE WINDOW FILM



REMOVE THE PROTECTIVE BACKING



SPRAY THE SURFACE WITH WATER



APPLY THE WINDOW FILM



SPRAY THE SURFACE WITH WATER



REMOVE THE EXCESS MOISTURE



TRIM ANY EXCESS

## SQUEEGEE FOR WINDOW INSULATION FILM INSTALLATION

Ref.  
139



This is a special squeegee used for the installation of Suberlev window insulation films. Thanks to its anti-scratch rubber the process of installation becomes even easier.

## NANOCERAMIC WINDOW INSULATION FILM

0'76 x 2 m.	0'76 x 4 m.	The whole roll
Ref. A320	Ref. A321	Ref. 137

Transparent nano ceramic window insulation film for use on glass surfaces.

Presentation	1,52 m x 30,5 m = 46,36 m <sup>2</sup> . Roll.
	0'76 x 2 m = 1'52 m <sup>2</sup> . Box.
	0'76 x 4 m = 3'04 m <sup>2</sup> . Box.



## SILVER WINDOW INSULATION FILM

0'76 x 2 m.	0'76 x 4 m.	The whole roll
Ref. A316	Ref. A317	Ref. 140

One way mirror film. As well as privacy, this reflective window film provides insulation.

Presentation	1,52 m x 30,5 m = 46,36 m <sup>2</sup> . Roll.
	0'76 x 2 m = 1'52 m <sup>2</sup> . Box.
	0'76 x 4 m = 3'04 m <sup>2</sup> . Box.



## FROST WINDOW INSULATION FILM

0'76 x 2 m.	0'76 x 4 m.	The whole roll
Ref. A318	Ref. A319	Ref. 142

Frosted glass effect film provides both privacy and insulation. It is suitable for glass surfaces.

Presentation	1,52 m x 30,5 m = 46,36 m <sup>2</sup> . Roll.
	0'76 x 2 m = 1'52 m <sup>2</sup> . Box.
	0'76 x 4 m = 3'04 m <sup>2</sup> . Box.



TYPE OF FILM	COLOUR	TRANSMITTED LIGHT	I.R. REJECTED	U.V. REJECTED
NANOCERAMIC	Very light greenish gray	Transparent 68%	84%	>99%
SILVER	Silver	Mirror effect 19%	90%	>99%
FROST	White opal	Translucent 23%	63%	>99%

## EMR/EMF SHIELDING PAINT



2,5 L.  
Ref. A323



Water-based paint for interior and exterior **shielding against EMF & RF frequencies** and EMR radiation. It can be applied to walls, ceilings and floors. It can be **painted over or covered up with wallpaper**.

This is a new technology in shielding which will guard your home **against radiation** coming from the **outside** and radiation whose source is **inside the house**. This paint eliminates high and low frequency radiation and redirects it to the grounding plug. Our shielding paint protects people frequently exposed to radiation.



Drying time	6-8 hours.
Recoat time	10-12 hours. It is recommended to apply the paint by brush in a criss-cross fashion.
Coverage	Recommended 400 ml/m <sup>2</sup> .

## GROUNDING PLUG

Ref.  
146



Grounding plug for **interior walls** painted with EMR/EMF shielding paint.

- One grounding plug per room is required. If the walls in your house are discontinuous it is necessary to install one grounding connection per sector. In large rooms, more than one grounding plug may be required.
- The plug must be screwed to the wall after it has already been painted, so that it would be in contact with the shielding paint.
- Grounding must be done by an electrician.
- 1m grounding cable is included in the kit.

## EMF SHIELDING CURTAIN "NATURE"

Ref.  
148



A special cotton fabric with **shielding microfilaments** of silver-plated copper thread is used to make curtains, roman shades, etc.

This EMF shielding curtain **protects the windows and doors** which are exposed to high frequency and low frequency radiation.

Washing and ironing are allowed in accordance with the manufacturer's recommendations.

Dimensions	22,50 m x lineal meter.
------------	-------------------------

<b>Sport.</b>	<b>Mono.</b>
Ref. 147	Ref. A306

## AIR TUBE HEADPHONES

Special headphones that shield **against electromagnetic radiation** generated by mobile devices and reduce it by up to 98%.

Their novel system allows for the protection of the most sensitive area of the body, the head.

Thus, air tube headphones carry sound through the **hollowed tubes** to the earbuds, instead of transmitting radiation to your head, as regular headphones do.

- High-definition audio.
- The headphones have a button to answer and hang up calls
- Built-in microphone
- Compatible with Smartphones, tablets, mp3 players and devices with a 3,5 mm Jack connector.



<b>Ref.</b>
149

## ANTI-RADIATION CELL PHONE CASE

Anti-radiation **cell phone** case which shields against electromagnetic waves generated by mobile devices.

It creates a **barrier** between the emitted radiation and a person.

It reduces radiation by up to 98% while maintaining signal strength.

The shielding effect is tested and certified by the Technological Institute of Energy (ITE).



<b>Ref.</b>
152

## PROFESSIONAL MEASUREMENT

A technician visits your home to perform a rigorous measurement of both **high** and **low frequencies**. Once the data is obtained, a report with a description and recommendations on how to improve the current situation is prepared.





## SPECIAL INJECTION GUN FOR CAVITY WALL INSULATION AND MORTAR

Ref.	Resins
153	Ref.A352



This is a specially designed gun for blowing the **insulating material** (Neolev or Natural Cork for Cavity Wall Insulation) into the cavities in your walls and false ceilings. It is also suitable for mortar application. This ergonomic tool has an air flow regulator.

The kit includes:

- 5-litre hopper (for mortar application).
- Special extraction hose, ideal for the delivery of insulation into cavity walls, 3 metre Venturi effect.
- Ø 20 mm nozzle.



## AEROGRAPHIC GUN FOR SPRAYED CORK APPLICATION

Gravity	Pressure
Ref.154	Ref.155



Special aerographic spray gun for **sprayed cork application** with an air-operated valve and a stainless-steel needle. It has great supply and output current.

The kit includes:

- Ø 5,5 mm nozzle.

There are two types of models available:

- Gravity spray gun, with a 45° elbow that makes the application to floors and ceilings easier.
- Pressure gun, that is meant to be used together with the Suberlev machine.

**It is suitable for the application of:**

- Insulation Paint.
- Thermo-Roofs.
- Sprayed Cork.
- Foamlev (with Ø 8 mm nozzle).

## SPECIAL GUN FOR MORTAR APPLICATION

Ref.
156



Special gun for roof insulation with **Suberlev thermal mortar** or Sprayed Natural Cork. It comes with quick camlock couplings, as well as air and flow regulator. It is meant to be used together with a projection machine.

The kit includes:

- Ø 8 - 10 - 12 - 14 mm nozzles.

Ref.  
157

## INDUSTRIAL SPRAYED CORK APPLICATION MACHINE

**Autonomous machine** which has built-in compressor, impulse pump, and 57-litre capacity hopper. Plug it into a 220v outlet.

Its approximate output is 700-800 m<sup>2</sup>/day, there have to be two workers on the roof.

Maximum pressure	7 bars, up to 10 m.
Power	1'5 kW (2cv).
Dimensions	580 x 860 x 1000 mm.
Weight	79 kg.



The kit includes a special gun, 7,5 metre hose (air and product carrying), and special nozzles for the application of paint, thermal waterproofing products and SUBERLEV sprayed cork.

Ref.  
158

## CORK AND MORTAR SPRAYING MACHINE

**Machine** suitable for the application of Insulating Paint, Thermal Waterproofing, Sprayed Natural Cork and mortars. It has a **30-litre hopper**, whose capacity can be increased up to 60 litres, and a **30-metre-long hose** for spraying the Suberlev Cork. Additionally, it has a 230v outlet. It's approximate output for the application of Suberlev sprayed cork is 800-1200 m<sup>2</sup>/day on flat roofs.

Maximum pressure	20 bars, up to 30 m.
Power	1'5 kW (2 cv).
Dimensions	1100 x 460 x 550 mm.
Weight	70 kg.



It is suitable for sprayed cork and thermal mortar application. The kit includes:

- Rotor / Stator C4-2
- High pressure spray gun for cork application.
- 10 m hose.
- 23 m cable with on/off switch.

Ref.  
A345

NEW

## PEARL COMPACTION MACHINE

**Machine** for the **compaction** of cavity wall insulation with resin. It consists of a compressor and a tank with the product.

Tank volume	10 L.
Compressor volume	80 L.
Motor power	2 x 750 W.
Weight	75 kg.



## SOLAR TUBE "SUBER-TUBE"

25 cm.	53 cm.
Ref. ST029	Ref. ST002



This is a system for capturing and **transmitting natural light**. It has an exterior light collector which maximizes light reception. Thanks to its highly reflective interior (99,70% of sunlight) this solar tube **illuminates any corner**.

This is an optimal solution for industrial buildings, warehouses and shopping centres, i.e. places that are visited mostly during the day.

- Resistant to UV radiation, this solar tube doesn't allow heat to enter the building.
- It is completely maintenance free.
- It is characterized by perfect impenetrability and water tightness.
- This solar tube reduces environmental impact and saves energy.
- Light entry register with remote control is available.

To provide an unparalleled lighting solution at night or on a cloudy day, this solar tube combines its daylighting technology with the latest in LEDs. SOL + LED = light 24 hours a day.



Diameter	25 cm. / 53 cm.
High	62,5 cm.

## SOLAR TUBE LED-IN SYSTEM

Ref.
ST003-ST012

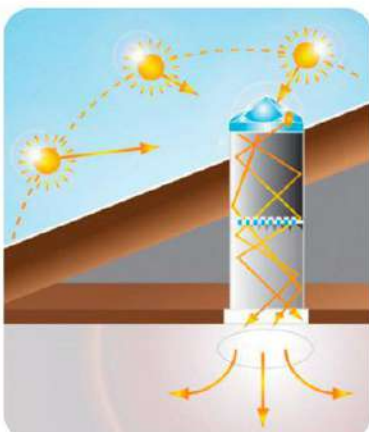


This is a lighting solar tube system which **allows for effective illumination 24 hours a day**.

During the sunshine hours the solar tube transmits natural light inside the building. In order to provide a lighting solution at night or on a cloudy day, the LED-IN system emits continuous light, so that the light level in the building always stays the same.

Control options:

- Standard (On-Off): The user turns it on/off manually.
- Manual dimming (manual control panel)
- Automatic dimming (lighting control console).



Model.	Power (w).	Luminance (lumens).
Led in 250	15	854
	30	1.708
Led in 530	15	1.708
	120	10.242

Ref.  
170

## LEV-FILTER FORCED VENTILATION SYSTEM FOR CONDENSATION CONTROL

**Forced air ventilation** system that provides **fresh air** to rooms in which it is installed. It is an optimal solution for industrial buildings, garages and other places that have moisture, condensation and mould problems, as well as places with unpleasant odour.

Dimensions	657 x 290 x 222 mm.
Maximum flow	300 m <sup>3</sup> /h (with two filters).
Speed	2220 rpm.
Maximum admissible intensity	0,65 A (230 V).
Installed power	0,08 kW.



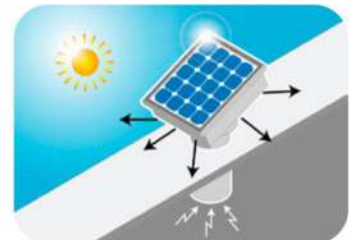
Ref.  
168

## SOLAR EXTRACTOR FAN

**Fan with a photovoltaic panel**, which ventilates and reduces room temperature, using solar energy and **respecting the environment**.

It is very **easy to install**. Water tightness is guaranteed. This fan is really silent, compared to regular ones. It can be connected to the electrical grid when the sky is cloudy. Moreover, it can be used together with a thermostat and/or a timer.

Dimensions	58 x 68 x 51 cm.
Diameter	25 cm.
Speed	2.400 rpm.
Motor power	12 V.
Installed power	50 W.
Electric power of the photovoltaic panel	12 V.
Flow rate	950 m <sup>3</sup> /h.
Weight	12,5 kg.



Ref.  
169

## ADJUSTABLE INDUSTRIAL EXTRACTOR

Extractor for **industrial buildings**. It can be connected to the electrical grid. Besides, it can be used together with a heat detector so that the extractor will be **turned on automatically** once the set temperature is reached.

The propeller is made of fiberglass reinforced plastic. The extractor also has a safety grating in accordance with the standard UNE 100250.

Dimensions	80 x 71 mm.
Diameter	63 cm.
Speed	890 r/min.
Maximum admissible intensity	3 A.
Installed power	370 W.
Maximum flow	12.350 m <sup>3</sup> /hour.
Sound pressure level	64 dB.
Approx. weight	21 Kg.



## LEVFILTER ECO

NEW

Eco	Eco Duo
Ref.A355	Ref.A356



**Ventilation unit** that can work both individually and as a combination of two units. This is a 97% efficient **heat recovery system** which helps save money on air conditioning. In addition, it **purifies stale air** and gives you an opportunity to use different types of filters.

One unit has a maximum air flow rate of 50 m<sup>3</sup>/h, with two units at work the air flow rate of 100 m<sup>3</sup>/h can be achieved.

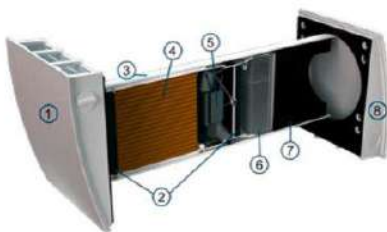
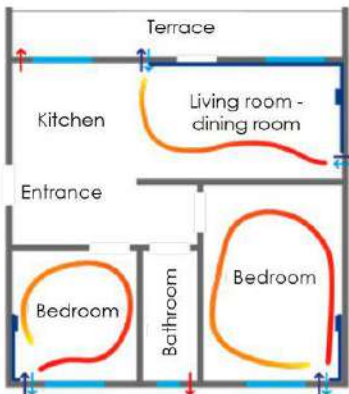
### How does it work?

Hot stale air is extracted from the room, it goes through a ceramic regenerator to which it transfers its heat energy and moisture.

As the ceramic regenerator gets warm, the unit switches to the mode of supply.

The unit purifies the cold air intake through the regenerator and absorbs the accumulated heat and moisture.

When the ceramic regenerator cools down, the unit switches back to the extraction air mode.



1. Internal decorative panel
2. Filter G3
3. Air conduct
4. Ceramic energy accumulator (regenerator)
5. Reversible fan with EC motor
6. Filter F8 (option)
7. Noise insulating layer
8. Outer hood

Speed	1	2	3
Voltage / 50-60 Hz [V]	100-230		
Power [W]	2,07	4,15	10,10
Air flow in ventilation mode [m3/h]	15	30	50
Filter	G3 (F8)*		
Transported air temperature [°C]	-30...+50		
Sound pressure level at 1 m [dB(A)] in accordance with ISO 3741: 2004	22	29	32
Sound pressure level at 3 m [dB(A)] in accordance with ISO 3741: 2004	13	20	23
Outdoor sound pressure attenuation in accordance with DIN EN 20140 [dB(A)]	41		
Heat recovery efficiency according to DIBt LÜ-A 20 [%]	92	86	78

Ref.

A357

NEW

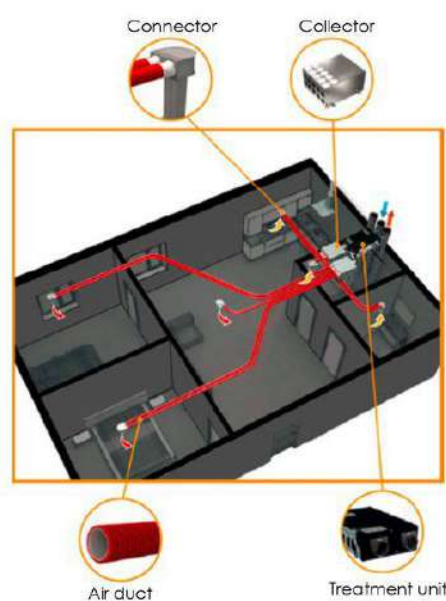
## LEVFILTER ECO 220

This is an **air handling unit** equipped with a heat recovery system which helps **reduce heat loss**. This ventilation system recovers up to 98% of heat. It has filters that purify the air.

The maximum air flow rate is 220 m<sup>3</sup>/h, that's why it is a perfect solution for the whole house.

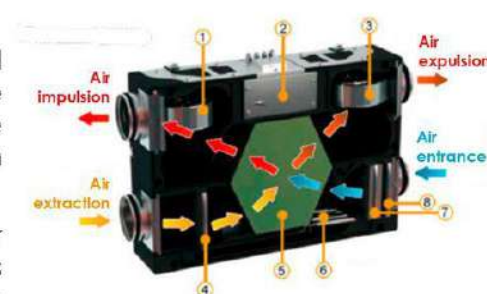


### How does it work?



As this unit has an incorporated counter-flow heat exchanger made of polystyrene, it can help you save a lot of money on air conditioning in the following way:

- **In winter**, the heat of the air extracted from the room is collected and transferred to the exhaust air stream, and that reduces heat losses through ventilation.
- **In summer**, the outside heat from the supply air is transferred to the exhaust air stream, significantly reducing the air conditioning load.



1. Supply fan
2. Control unit
3. Extract fan
4. G4 extract filter
5. Heat exchanger
6. Bypass damper
7. F7 supply filter
8. G4 supply filter

Unit voltage	1 – 230 V.
Maximum power	87 W.
Maximum current	0,71 A.
Maximum air flow	220 m <sup>3</sup> /h.
RPM	2200 min-1.
Sound pressure level at 3 m	33 dBA.
Transported air temperature	- 25°C a + 60°C.
Casing material	Expanded propylene (EPP).
Insulation	EPP 30-15 mm.
Extract filter	G4.
Supply filter	G4, F7.
Connected air conduct diameter	Ø 150 mm.
Weight	14 kg.
Hear recovery efficiency	from 86% to 98%.
Heat exchanger material	Polystyrene

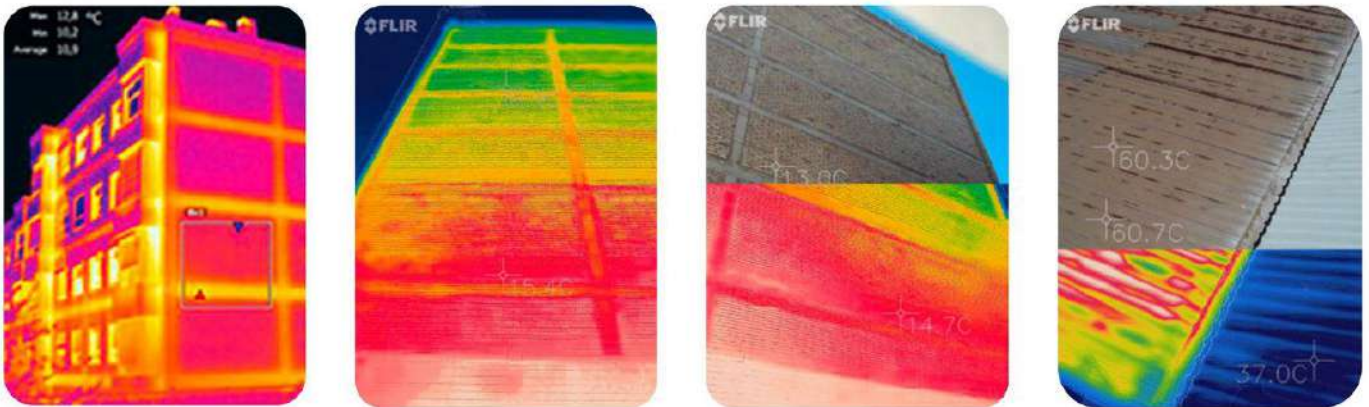
**\* Recommended for passive houses and zero-energy buildings.**

Thanks to thermographic cameras we are able to capture and create an image of an object by using infrared radiation emitted from the object in a process. This knowledge applied in the building sector makes building condition assessment easier.

This method of study and quality control for construction works has a lot of advantages, for instance:

- **Real-time measurement:** measurement can be carried out at any time, and if the object temperature changes, for some reason, it will be noticed immediately.
- **Two-dimensional plane:** It means we can make measurements at several areas at the same time.
- **Complete information:** In the thermogram allied to a single wall temperature or the temperature of some part of the building, we can see the temperature of the whole building. This way we can check if there are any defects, dampness, leaks, etc.

In order to get the most out of this tool, it is necessary to know how to interpret the data.



## FLIR ONE PRO

Ref.

ONE-A296



When connected to a smartphone, it gives a new view of everyday world. It helps find problems with the house, optimizing its energy efficiency.

It contains an advanced image processing system, and takes high resolution photos (1440 x 1080 pixels).

iOS connection is dependent upon the compatibility with mobile devices.

## MEASUREMENT AND THERMAL IMAGING REPORT

Ref.

176



Our specialist will be glad to make a thermography measurement for you and give you a thermal imaging report as well as recommendations on how to insulate the house.

## MACHINERY RENTING

We have different types of machinery for the application of all our products: GRACO RTX 1500 machine, PFT SWING machine, Gentillini compressor, spray guns, cavity wall insulation equipment that allows for instant pearl compaction, etc. Please do not hesitate to contact our sales department if you require further information.



## TRAINING COURSES

We give training courses to everyone who wants to get certified in the application of all our products and systems. The courses cover both theoretical and practical training.



## RECOMMENDATIONS AND TECHNICAL REPORTS

We prepare technical documentation and reports every time they are requested. We also give professional recommendations describing in detail the steps to follow in each particular case in order to obtain the best result and warranty service.



## TECHNICAL ADVICE

Our technical department is always ready to advise our clients and choose the best insulation or waterproofing solution for any building.







### PENTAGON

This is a 2,10 m high wooden stand which is divided into two units. There are 4 real samples of our insulation systems, waterproofing products, and decorations on each side.

### PYRAMID SHAPED

A wooden stand, which is designed to hold 9 large-format portable samples of our products. Each sample size is 70 x 60 cm, and the display stand height is 1,90 m.



### TABLE UNIT

This is a 1,05 m high piece of furniture, which is designed to hold 10 real samples. It serves two purposes: it can be used as a display unit and a table at which you can attend to customers.



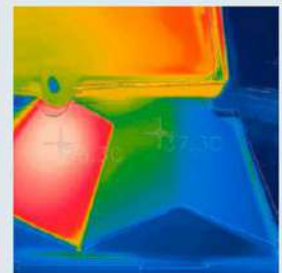
### COMB

A comb-shaped display stand, which is designed to hold medium-sized samples (40 x 22 cm). It is an easy-to-handle piece of furniture that can be placed on any shelf, table, window display, etc.



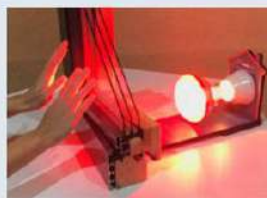
### "ROOFS"

This piece of furniture is used to check the effectiveness of our products (such as Sprayed Cork, Thermo-Roofs, Thermo-Facades, etc.) in situ.



### "WINDOW INSULATION FILMS"

This piece of furniture is used to show the functioning of our window insulation films. A glass sample with or without insulation film can be placed inside.



### OTHER MARKETING MATERIALS

We have catalogues, brochures, Sprayed Cork colour charts, Suber-Paint colour charts, window insulation films leaflets, etc.



**ENERGY EFFICIENCY**  
THE CHEAPEST ENERGY IS THE ENERGY YOU DON'T USE



WE DEVELOP NEW STANDARDS IN ORDER TO CREATE A BETTER ENVIRONMENT



**AISLAMIENTOS SUBERLEV S.L.**

Pl. La Mina C/ Uno, nave 6  
12520 Nules (Castellón), SPAIN

☎ 00 34 96 185 72 86  
✉ [suberlev@suberlev.com](mailto:suberlev@suberlev.com)  
🌐 [www.suberlev.com](http://www.suberlev.com)

Authorized dealer



This catalogue is merely informative, it is based on our experience and is accurate to the best of our knowledge. No guarantee should be implied, however, as the conditions of use are beyond our control. This catalogue will lose its validity as soon as a new edition is published.

It is not subject to regulations for the identification of hazardous products.